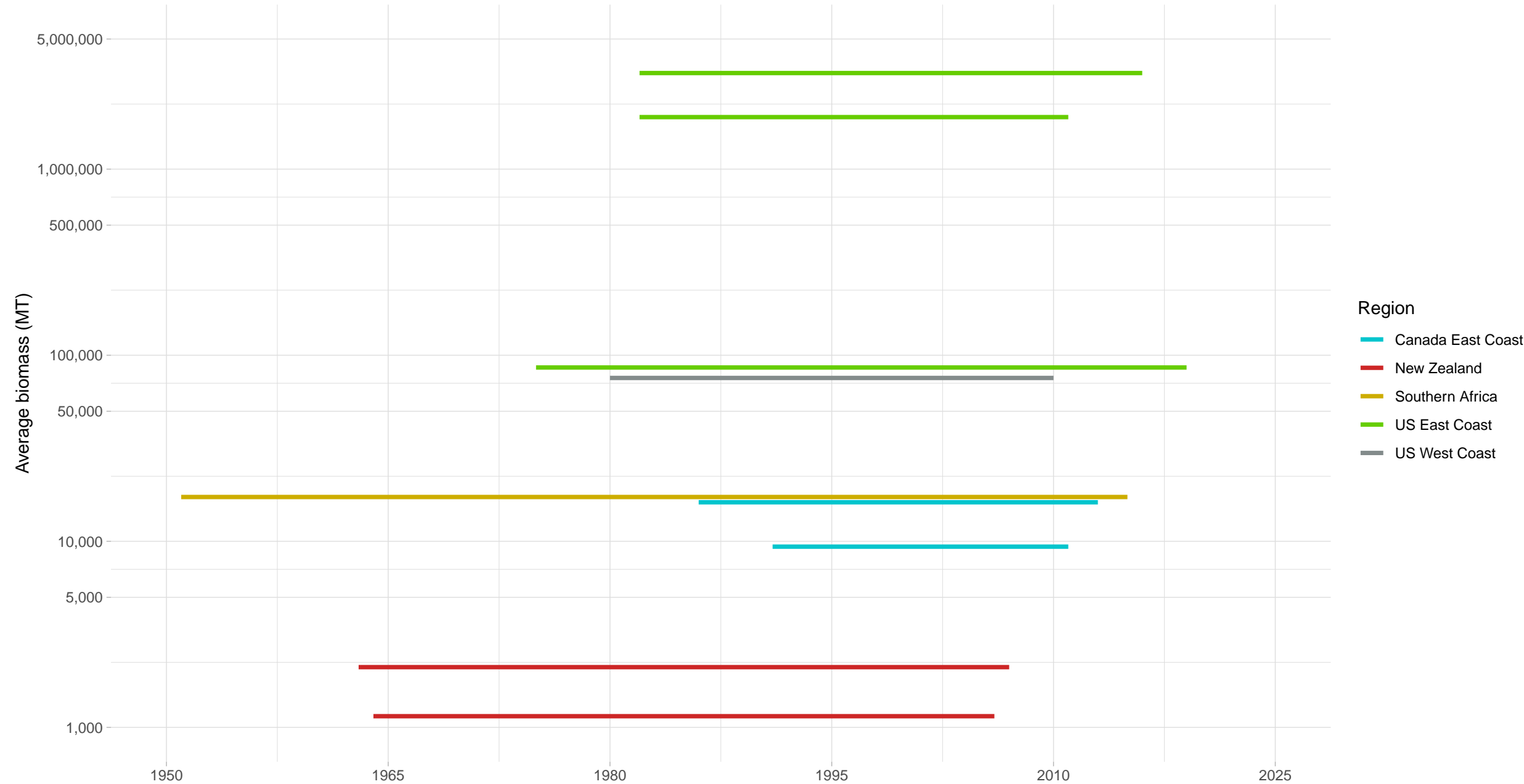


Biomass Coverage in Bivalves–Gastropods Taxonomy Group



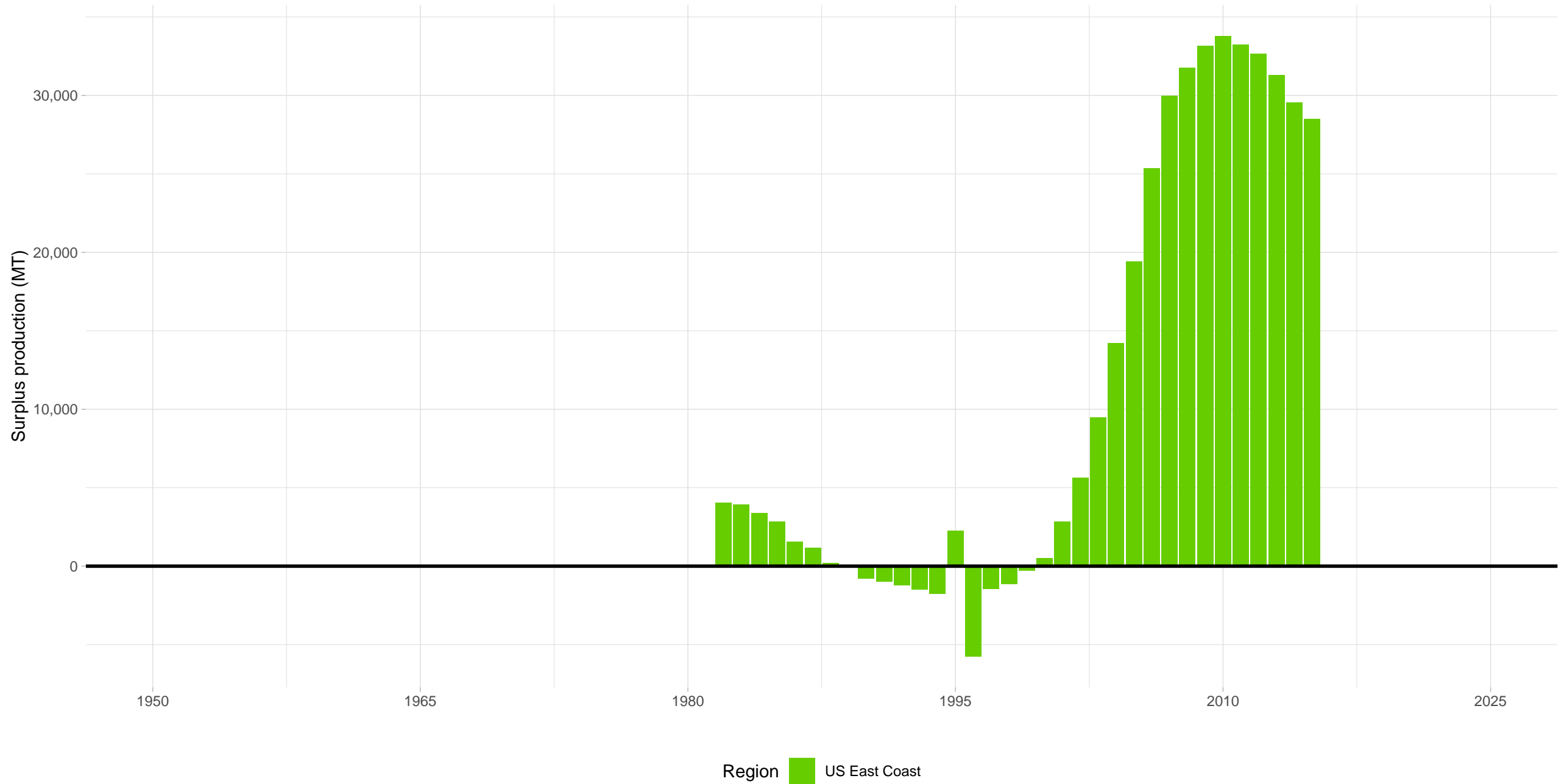
Biomass Coverage Over Time in Bivalves–Gastropods Taxonomy Group

Stocks ordered from lowest to highest average biomass



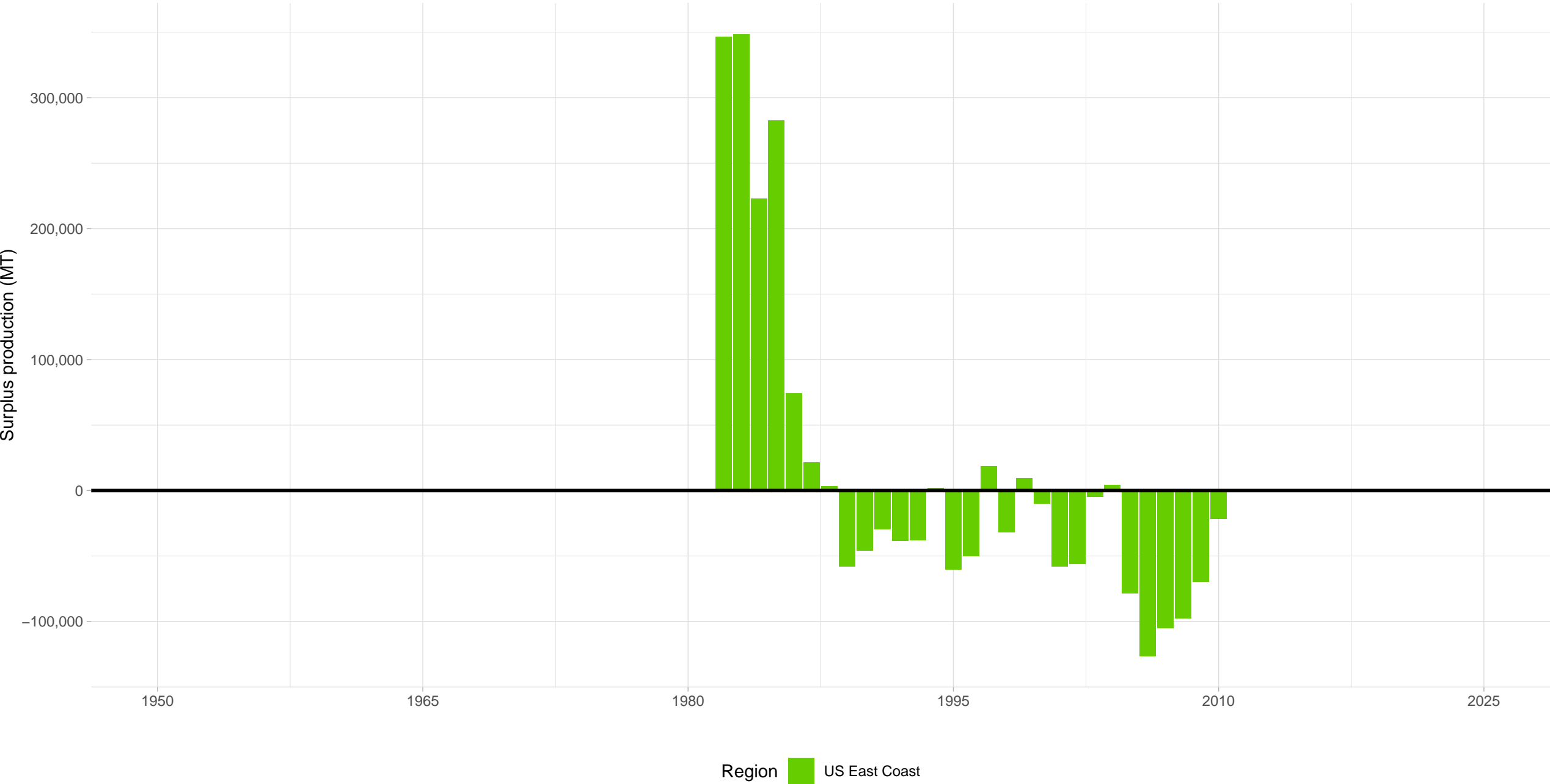
# Ocean quahog Atlantic Coast – Bivalves–Gastropods Taxonomy Group

Stock represents 10% of average absolute surplus production



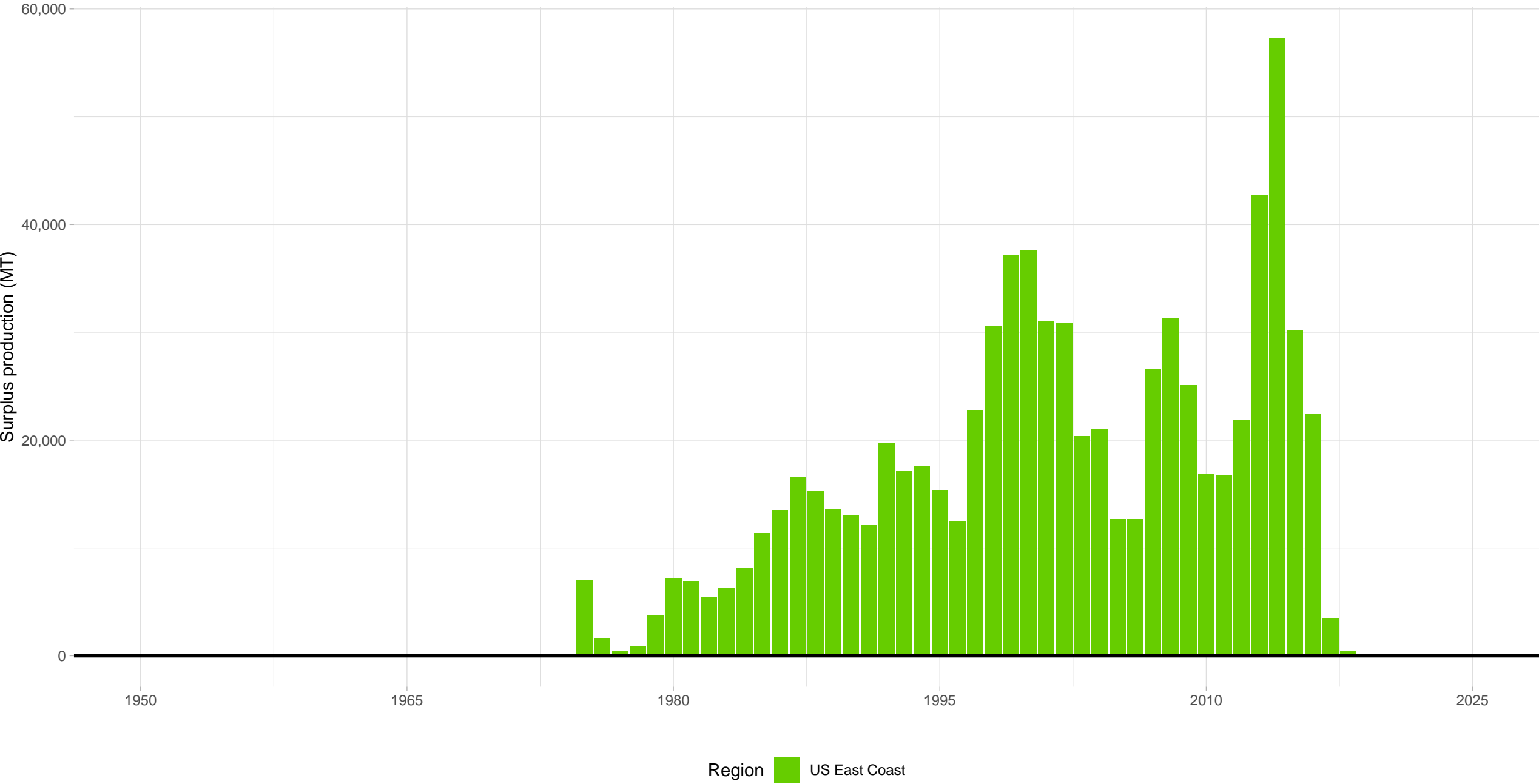
Atlantic surfclam Mid-Atlantic Coast – Bivalves–Gastropods Taxonomy Group

Stock represents 65% of average absolute surplus production



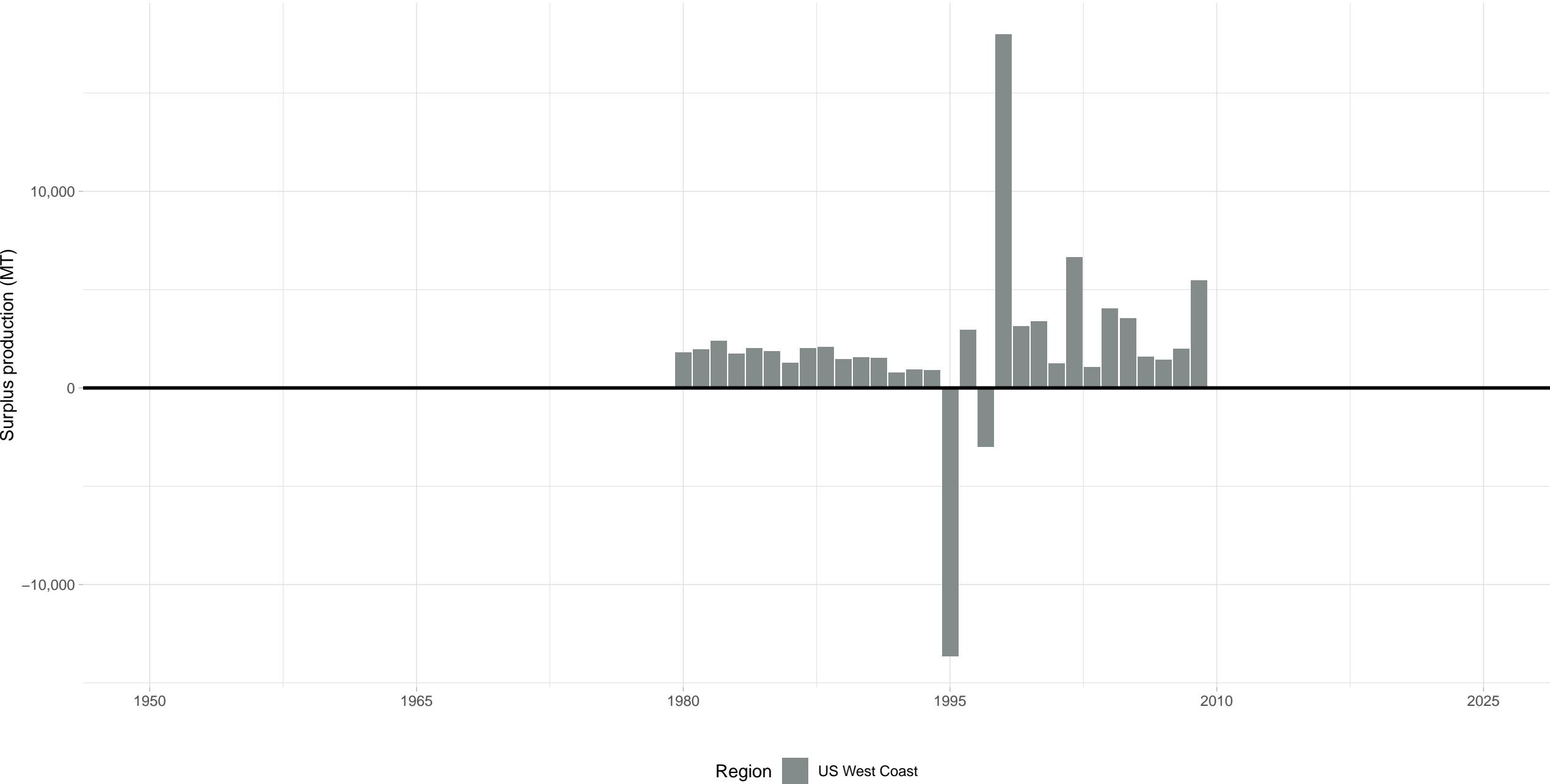
Sea scallop Georges Bank and Mid-Atlantic Bight – Bivalves–Gastropods Taxonomy Group

Stock represents 14% of average absolute surplus production

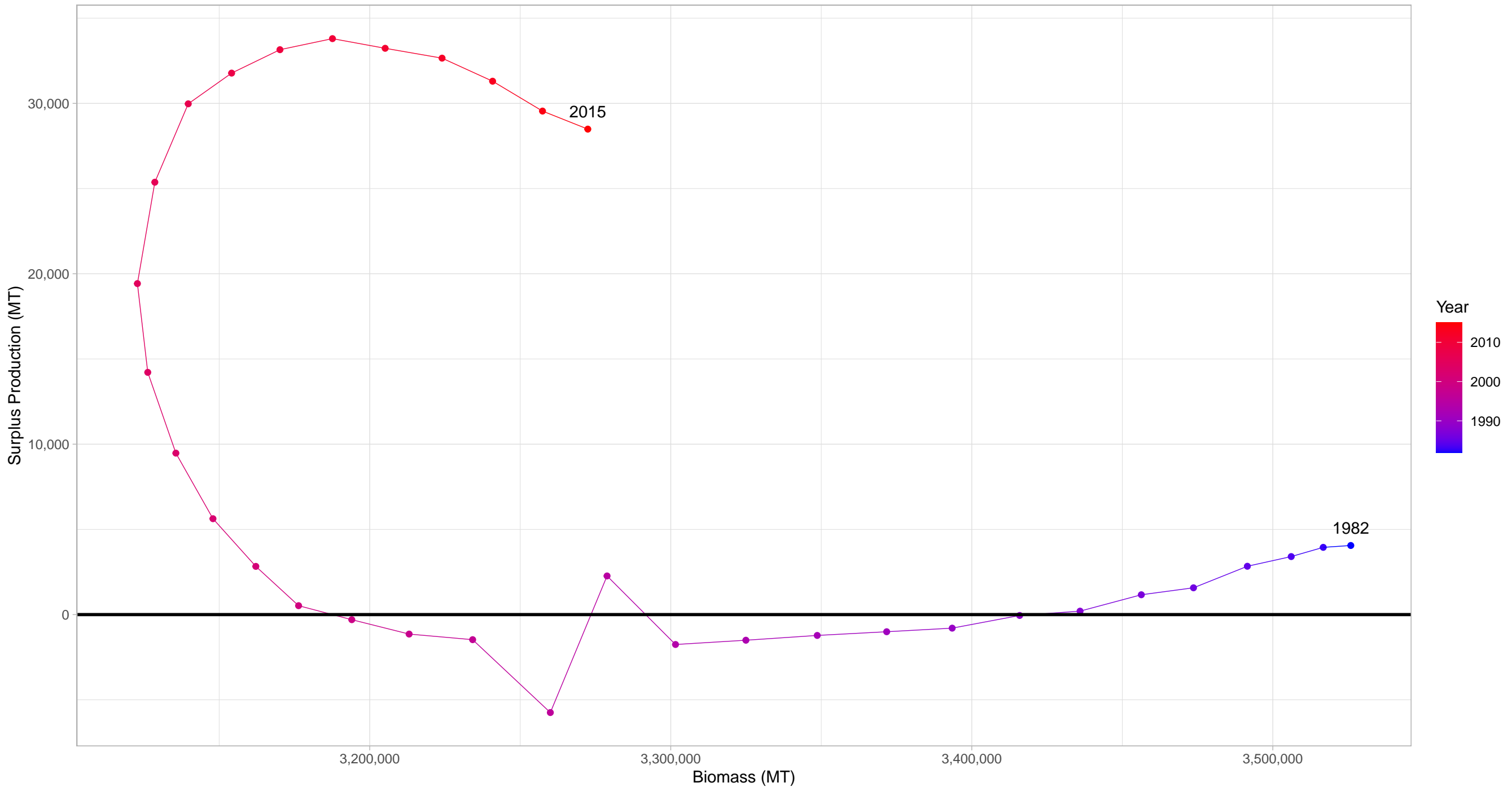


Pacific geoduck Washington – Bivalves–Gastropods Taxonomy Group

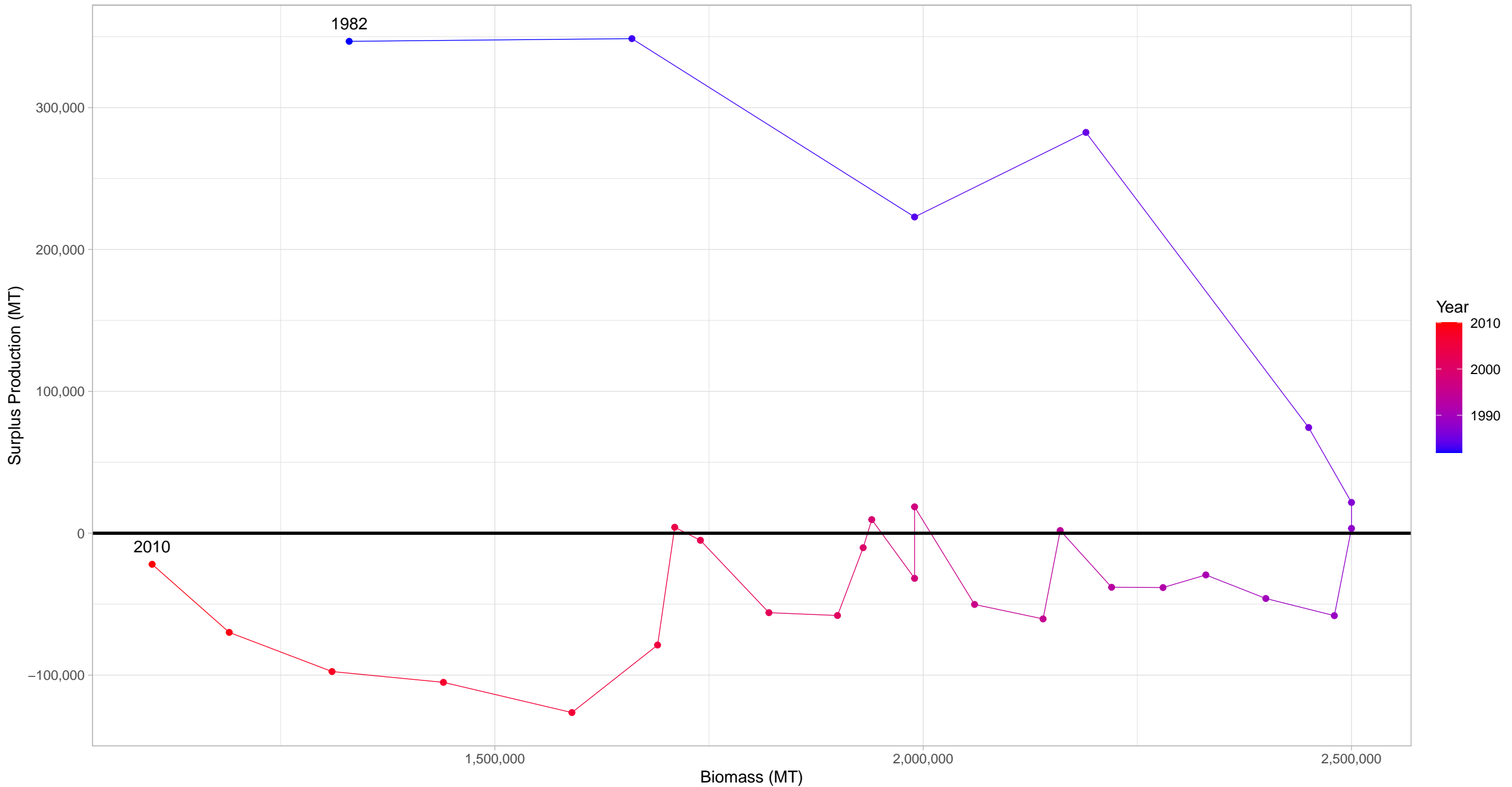
Stock represents 3% of average absolute surplus production



Ocean quahog Atlantic Coast  
in Bivalves–Gastropods Taxonomy Group

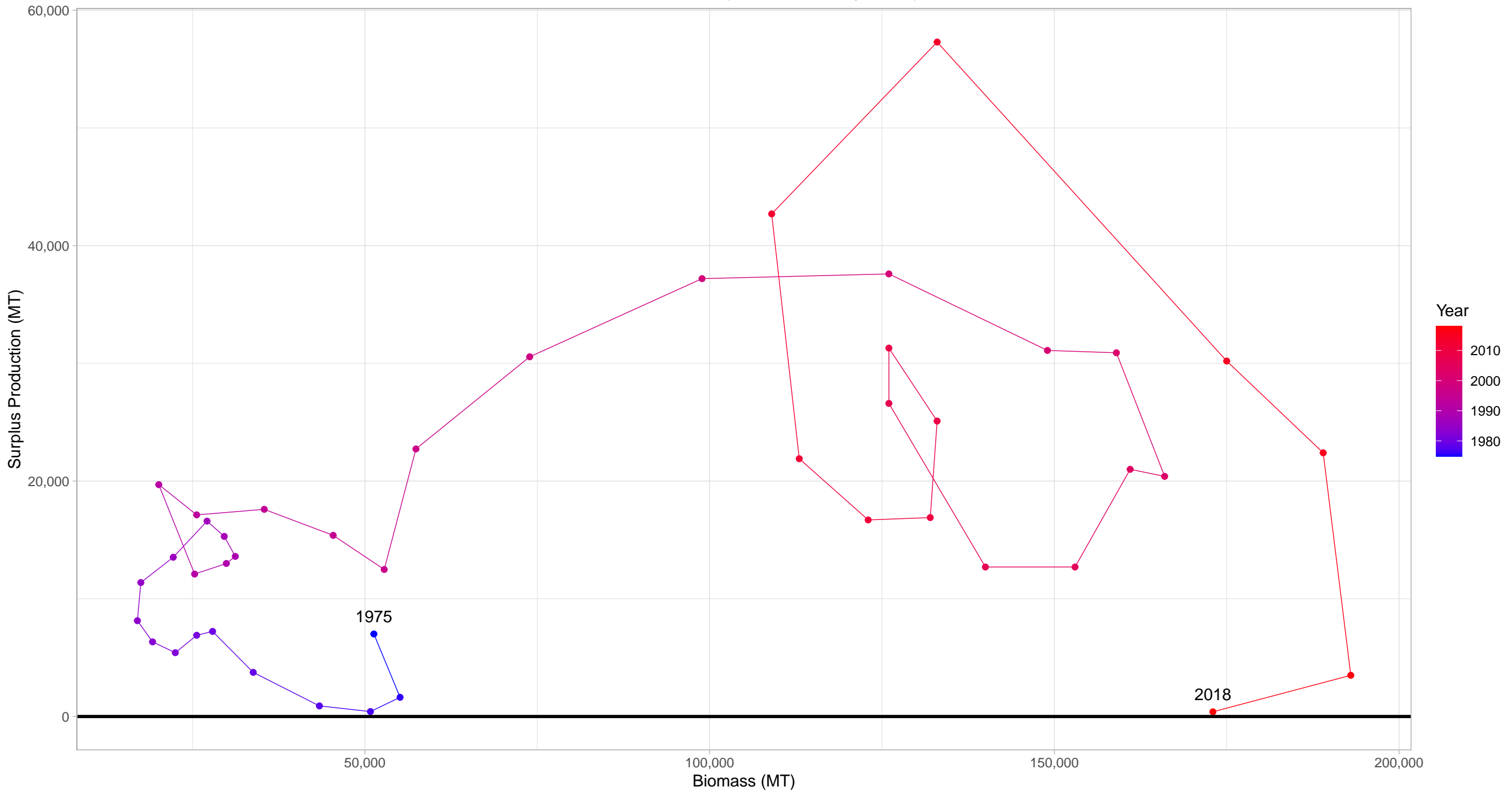


# Atlantic surfclam Mid-Atlantic Coast in Bivalves–Gastropods Taxonomy Group

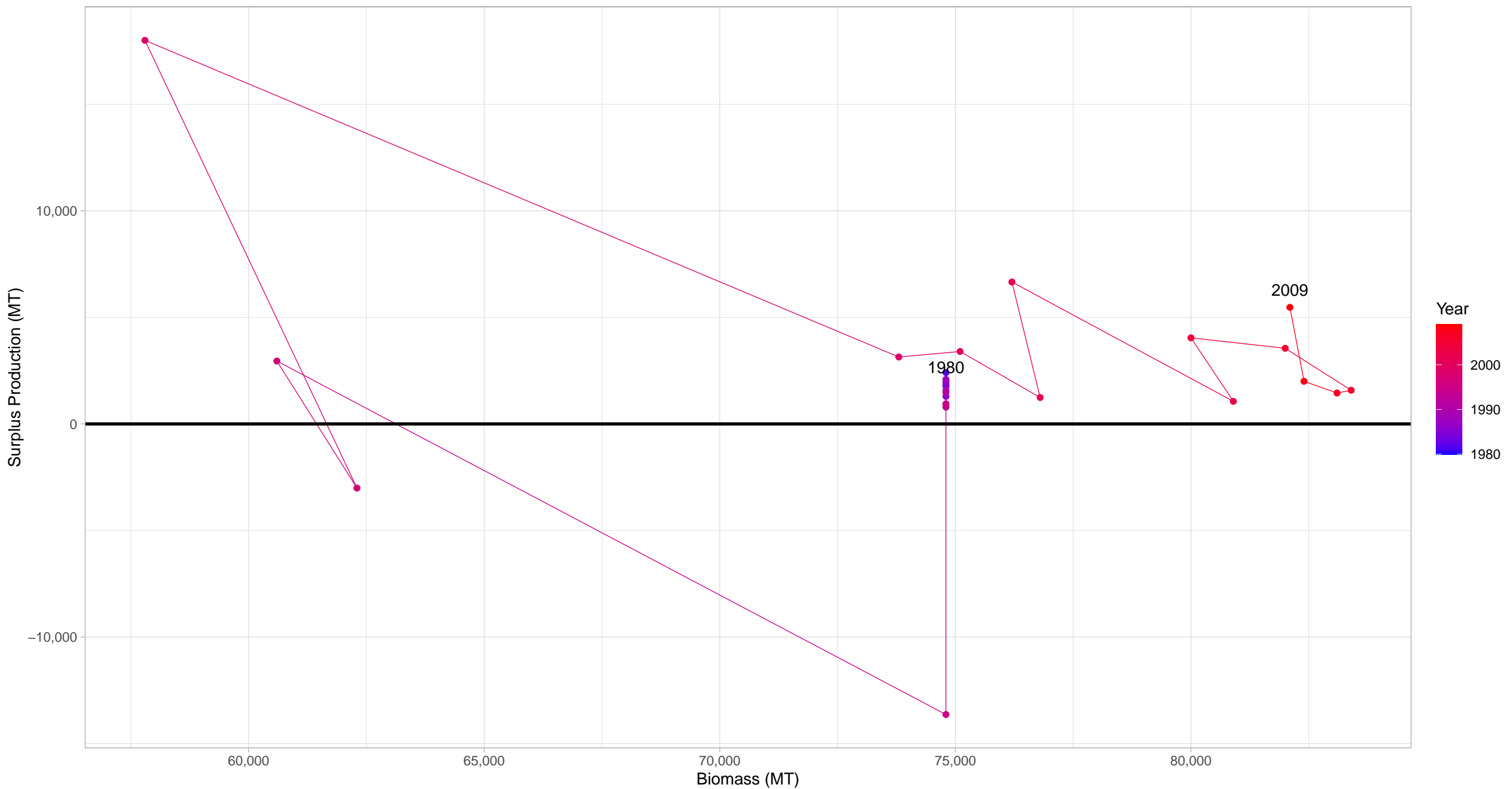




# Sea scallop Georges Bank and Mid-Atlantic Bight in Bivalves–Gastropods Taxonomy Group



Pacific geoduck Washington  
in Bivalves–Gastropods Taxonomy Group



First and last years with recorded surplus production are labeled